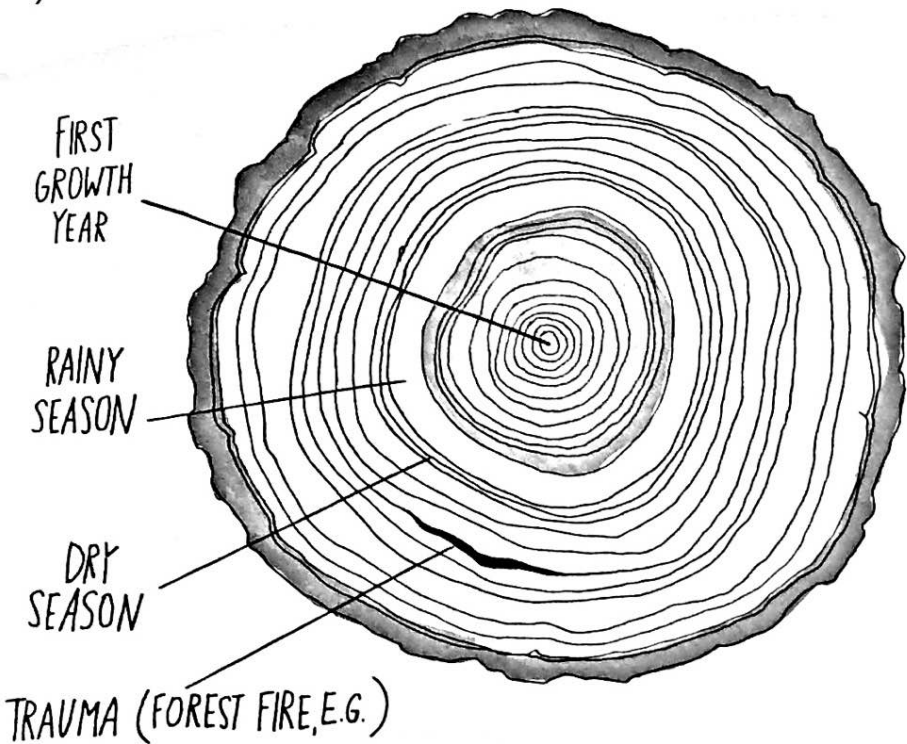


Dendrochronology

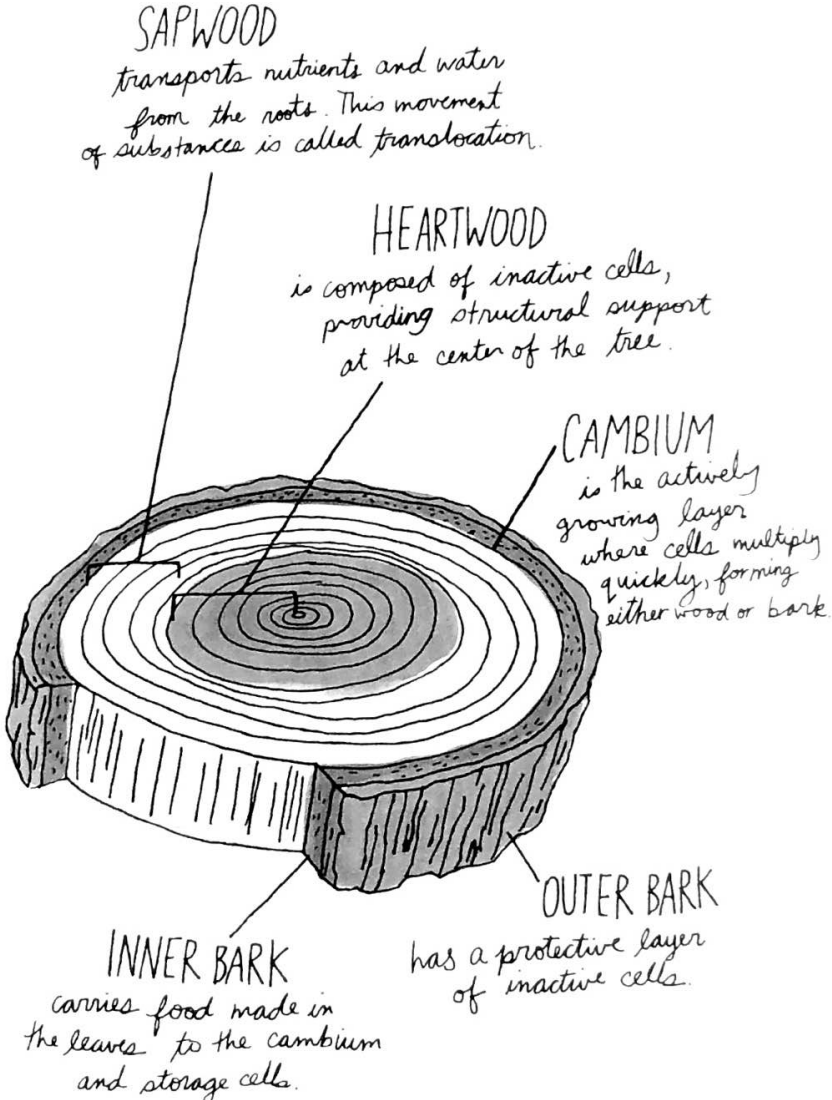
(DETERMINING THE AGE OF A TREE BY COUNTING THE GROWTH RINGS IN A CROSS-SECTION OF ITS TRUNK)

New growth appears as rings in cross-sections of a tree's cambium layer, where one ring usually marks the passage of one year. Trees growing in temperate zones with distinct summers and winters develop the clearest rings. A long, wet growing season will result in trees having wider rings. Dry years create very thin rings.



The oldest living tree recorded is named "The Hatch Tree." It was cored to reveal 5,063 rings. It's a Great Basin bristlecone pine located in the White Mountains of California.

ANATOMY OF A TRUNK



1. **Color** each ring. Use **markers** to trace along the edge of the ring. This **dark color** represents **dark summer wood** when the tree grows more slowly in the hot, dry months.
2. Use **colored pencil or crayon** to color in the rest of the ring. This **light color** represents **light spring wood** when the tree grows quickly after springtime rains.
3. **Cut** out your tree cookie along the outside edge.
4. **Glue** your tree cookie to your piece of construction paper.
5. **Enjoy** your one-of-a-kind tree ring art!

